



**FINANCE POLICY COMMITTEE**

# **LATE ITEMS**

**5 AUGUST 2025**

LATE ITEMS

2      GENERAL REPORTS .....3

2.2      Small Donations - Requests for Donations Additional .....3

## 2 GENERAL REPORTS

### 2.2 SMALL DONATIONS - REQUESTS FOR DONATIONS ADDITIONAL

RECORD NUMBER: 2025/1635

AUTHOR: Jen Sharp, Director Corporate & Commercial Services

#### EXECUTIVE SUMMARY

This report provides information to Council to allow for the consideration of a resolution regarding applications for funding through the Small Donations Program received after the submission closing date for the 5 August 2025 meeting. The Mayor requested the late submission to be included as a late paper for the meeting.

The Small Donations Program has been established to provide assistance to community and not-for-profit groups that offer significant contribution to the social, economic and/or environmental wellbeing of the Orange Local Government Area (LGA)

#### LINK TO DELIVERY/OPERATIONAL PLAN

The recommendation in this report relates to the Delivery/Operational Plan strategy “10.2 Develop and attract a variety of events, festivals, venues and activities that attract visitors”.

#### FINANCIAL IMPLICATIONS

The budget for General Donations within the Small Donations Program for 2025/2026 is **\$90,000**. The total requested in this late submission to the August meeting is \$10,000. The total recommended for approval for this late submission is **\$2,500**.

Not the table below assumes that the recommended amounts were approved by Council during the meeting, if a different amount is approved the figures below will not reflect those changes.

<b>Annual budget 25/26</b>	<b>\$90,000.00</b>
<i>Total spent to date</i>	\$14,082
<i>Recommended amount this round</i>	\$2,500
<i>Remaining balance</i>	\$73,438

#### POLICY AND GOVERNANCE IMPLICATIONS

Refer to Council’s Donations and Grants Policy - ST32

This policy is in accordance with these sections in the Local Government Act 1993:

1. Section 356 (financial assistance)
2. Section 377 (delegated authority)
3. Section 610E (waive or reduce fees)

And in accordance with this section in the Local Government Regulation 2021:

Section 207 (record of donations for auditing purposes)

**RECOMMENDATION**

**That Council determines the application to donate \$2,500 to Orange Push for Palliative to contribute to palliative care items at Orange Hospital.**

**FURTHER CONSIDERATIONS**

Consideration has been given to the recommendation's impact on Council's service delivery; image and reputation; political; environmental; health and safety; employees; stakeholders and project management; and no further implications or risks have been identified.

**SUPPORTING INFORMATION**

<b>Applicant 1</b>	<b>Orange Push for Palliative</b>
<b>Assistance Would Support</b>	Support the current palliative care expansion at Orange Base Hospital to provide a homelike, private atmosphere for families supporting loved ones in their final days.
<b>Amount Requested</b>	\$10,000
<b>Amount Recommended for Approval</b>	\$2,500
<b>Policy Category</b>	Community group providing benefit to the local community
<b>Category Maximum</b>	\$2,500
<b>Complies With Policy</b>	Partially, requested funding exceeds the category maximum.
<b>Previously funded by Council?</b>	Yes  2019/2020 - \$1,953.45  2015/2016 - \$3,000

**ATTACHMENTS**

- 1 Small Donations Program - Application Form - General Donations - Orange Push for Palliative - Hospital lounge area refurbishment (redacted), D25/90490 [↓](#)



## SMALL DONATIONS PROGRAM - APPLICATION FORM

## General donations

Community or not-for-profit group providing benefit to the local community can apply for a maximum of \$2,500

This document will be made public, and only fields with this icon  will be redacted.

## APPLICANT'S DETAILS

Name of organisation: Orange Push for Palliative

Contact name: Jenny Hazelton

Position: President

29745378166

## YOUR ORGANISATION



Not-for-Profit



Community Group

Please provide a short description of your organisation, and its purpose.

Orange Push for Palliative (OP4P) was formed in 2015 as a result of substantial community concern about the lack of dedicated palliative care beds at the new Orange Hospital. OP4P is a small but mighty advocacy group of volunteers who have been determined to improve palliative care services to support the right of people to make real choices about how their last days are spent; to mobilise the skills, expertise and love of family, carers and health workers to ensure that end of life can be faced as painlessly as possible and with the dignity to which we are all entitled.

During this time Orange City Council has stood beside OP4P providing continued support for this important issue. Our advocacy and your support has seen the designated beds grow to 2 in 2021 to 5 in 2025 with the current build of 3 additional dedicated beds to be completed in January 2026. This build is part of the NSW Ministry of Health's World Class End of Life Care project- one of only 5 sites in NSW - and 1 of 2 in rural areas.

At Orange Hospital, OP4P has been responsible for providing practical comforts and more homelike environment in the existing 2 bed Palliative Care Unit. Our volunteers visit daily to ensure that patients and their families are comfortable at this difficult time. This is only possible through funds generated by donations. OP4P is currently fundraising to refresh the existing beds and lounge area and value-add to the new beds with art work, cuddle beds, new quilts and outdoor furniture for the new courtyard.

More information can be found <https://www.op4p.org.au>

## Attachment 1 Small Donations Program - Application Form - General Donations - Orange Push for Palliative - Hospital lounge area refurbishment (redacted)

## YOUR REQUEST

Amount requested: \$ 10,000

Date event if applicable: Launch 12th August 2025

What round are you applying for? ☐ Round 1 ☐ Round 2 ☐ Round 3 ☐ Round 4

If you have attempted to seek funding for this project from any other source, including other grants, requests for in kind donations or reduction in costs from suppliers, please provide details:

Funding is being sought through a variety of organisations, service clubs, corporates and community groups. We are hoping to obtain some significant funding from Newmont Mining (Cadia Mines) however each organisation cannot meet all the needs we have to meet our goals.

What will this donation be used for?

We are looking to support the current palliative care expansion at Orange Hospital with the 2 existing beds to 5 beds in total. We are looking to refresh the two existing rooms and lounge area, and ensure that all five beds/rooms have a warm, homelike, private atmosphere that will be suitable for the families, including children to provide comfort & support for loved ones in their final days.

A \$10,000 donation could provide one of the following:

- Outdoor seating and garden features for the courtyard; or
  - Framing of donated Orange photographs (donated by the late Alf Mancigli)
  - Refresh existing palliative lounge area for families.
- Or a number of other options as shown in the attachment.

## BENEFIT TO ORANGE

Please outline how the donation will contribute to the social, economic and/or environmental wellbeing of the Orange Local Government Area.

Palliative and end of life care is an important support for the wellbeing of Orange residents who are experiencing the last stages of life. It has been a strategic priority for Council for many years. NSW Health Figures showed only 16% of people die at home, approximately 20% die in a hospice, 10% die in an aged care facilities (nursing homes) and over 50% die in acute care hospitals. With that large percentage it shows there is a need to provide this comfort to that large percentage of families. NSW Health has recognised that there is a significant gap in palliative care service provision in Orange and their planning acknowledges that five end of life care designated beds at the Hospital is needed now. The Ministry responded to community pressure and advocacy with the support of State member Phil Donato to provide some equity in rural funding allocations by including Orange in the World Class end of life project.

## ALIGNMENT TO COUNCIL'S COMMUNITY STRATEGIC PLAN

Which theme/s best match your reason for donation?



**LIVE: A healthy, safe, inclusive and vibrant community**



This theme recognises the importance of encouraging healthy lifestyles, community pride and a sense of belonging.



**PRESERVE: Balancing the natural and built environment**



This theme ensures that the unique natural, cultural, social and historical aspects of our community are preserved while recognising the need for growth and improvement.



**PROSPER: A smart, innovative and resilient economy**



This theme focuses on providing the community with positive choices for investment, employment and study.



**COLLABORATE: Leadership and partnership**



This theme looks at forging a collaborative community that engages with open and ongoing decision making.

**COSTS AND FUNDING**

Please provide a summary of your event costs and funding sources. For equipment purchase, please attach quotes.

COSTS	3 Additional Double-size Cuddle Beds (\$34,210 each)	\$ 102, 630
	Refresh palliative family lounge area	\$ 10,000
	Framing for corridor images (15 images)	\$ 12,787
	Outdoor seating and garden features for the courtyard	\$ 10,000
	Many more items are required, total fundraising goal is \$150k	\$
	Total costs	\$ 150,000

FUNDING	Your contribution	\$
	Funding from other councils	\$
	Contribution from other sources	\$
	Total funding	\$

**BANK ACCOUNT DETAILS FOR PAYMENT****DECLARATION**

On behalf of: (name of organisation if applicable) Orange Push for Palliative

☒ I certify to the best of my knowledge that the statements made in this application and any supporting documentation are true.

[Redacted Signature] Date 31 July 2025

Print name Jenny Hazelton

Position in organisation President

The information you provide will be handled in accordance with the Privacy and Personal Information Protection Act 1998. The supply of information by you is voluntary. If you cannot provide or do not wish to provide the information sought, your application may be unable to be processed. Any personal information collected from you will be in order to process your application.



# “Partnering In Palliative Care”

*Your Voice Matters. Your Support Counts.  
Together, we can make a difference.*

As part of a NSW Government statewide initiative, Orange Health Service is expanding its inpatient palliative care services, which will include three additional dedicated bedrooms, a family-friendly lounge, and a courtyard. This project marks a significant step forward for end-of-life care in our region.

## A Community Opportunity

While fixtures, furniture and artwork are included in the NSW Government's Palliative Care expansion at Orange Health Service, there are further opportunities to enhance the service to provide emotional and physical comfort of patients and families receiving end-of-life care.

We are calling on community organisations, service clubs, businesses and individuals to support the value-added components and uplift to the existing palliative care unit that make these spaces more welcoming and personal.

## All Contributions Stay Local

Donations will be managed by Orange Push for Palliative (OP4P), a trusted community organisation with a long-standing commitment to improving end-of-life care in Orange.

OP4P has worked closely with Orange Health Service to develop a register of items (See over the page) that could be funded or donated to uplift and personalise the palliative Care service at the hospital which includes the new and existing spaces.

**“Your support matters and will make a difference!”**



**Scan the QR code to donate today!**



**op4p.org.au**

**Call: 0424 656 513**

For further information about the NSW Government's World-Class End of Life Care program visit [www.nsw.gov.au/palliative-care-program](http://www.nsw.gov.au/palliative-care-program)

OP4P is a registered charity under the Commonwealth Charities Commission – INC1501807  
All donations over \$2.00 are tax deductible.

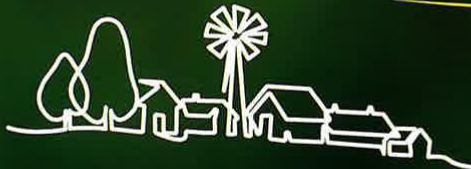


## Value Added and Uplift Items for expanded dedicated Palliative Care



**3 x Additional double-size cuddle beds**  
**\$34,210 each**

Citadel Plus, inclusive of Velaris pump mattress, delivery and additional staff training  
**\$102,630**



**Freya Blackwood's art**  
in the Children's corner



**Refresh existing palliative space**  
existing ward A Lounge area  
**\$10,000**



**Framing for corridor images**

15 selected photographs by local artists  
2200mm x 1100mm  
2000mm x 900mm  
**\$12,787 for 15 / \$8,525 for 10**



**Small photographic images**

in the approved colour palette  
Approx. 15cm x 15 cm, 4 in each room 20, 12 in 2 lounges  
**32 Frames \$6,000**



**Original artwork**  
Additional commissioned original artwork  
**\$1,500**



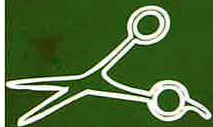
**Outdoor seating and garden features**  
for the courtyard  
**\$10,000**



**Aboriginal mural**  
for courtyard commissioned local Wiradjuri artists

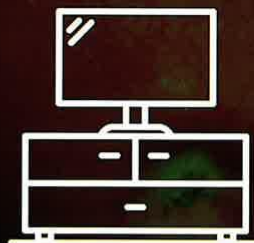


**20 Cushions**  
in approved colour palette  
**\$600**



**Handcrafted quilts**

in approved colour palette to assist our quilters with expenses of binding, Double beds 78"x80"  
**30 x \$200 = \$6,000**



**AV equipment**

- ♥ Individual speakers for each room **\$1,500**
- ♥ Virtual Reality googles to enable patient to revisit their favourite places in a virtual manner **\$1,000**
- ♥ Mini Recorders to capture the biographies of life patients

Funding is required to continue providing out-of-hours food and beverages, and single-use toiletries for the comfort and support of friends and family. Your ongoing support—large or small—will directly impact patients and families at Orange Hospital during one of life's most vulnerable times.

**Small Ongoing Donations**